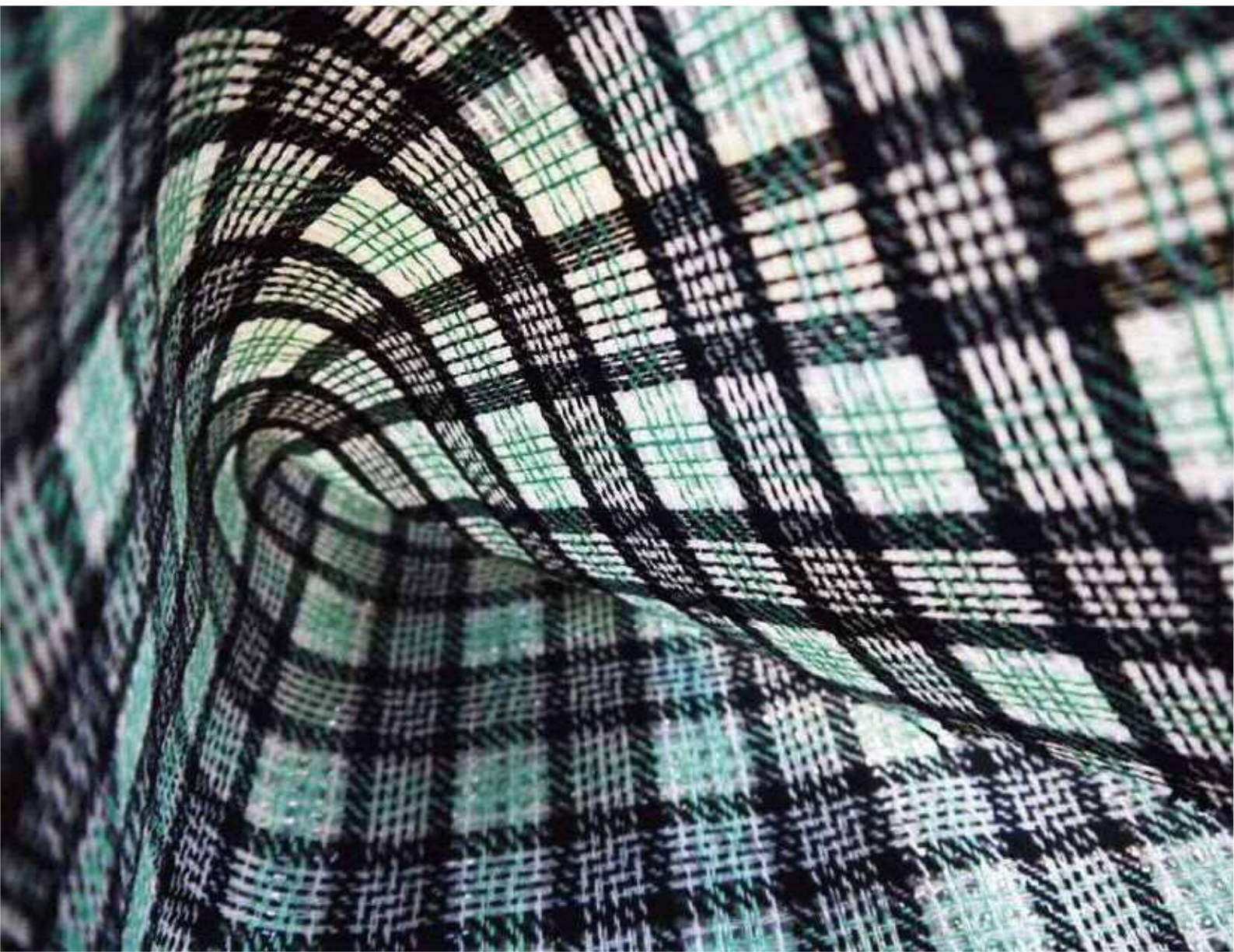


# JAPAN

# TEXTILE

# CONTEST 2017

Entry conditions



JAPAN  
TEXTILE CONTEST

Entry submission period : September 1 (Fri) –29 (Fri)

---

Exhibition : February 21(Wed) -23(Fri) 2018 , venue Ichinomiya Gymnasium  
in the Exhibition of "THE Bishu"

# Japan Textile Contest 2017

## 2017 Entry conditions

This contest has been established under the theme of "Scouting for and fostering people active in the world of next-generation textiles", in order to strengthen technical, design, and marketing abilities in the textile industries, to foster their most creative people, and to increase business chances and to transmit attraction of manufacturing.

### Participation

- Open to participants from Japan as all other countries.

### Eligibility and qualifications

- There are no restrictions. (Specify the name of the company )

### Entries

- Previously unpublished textile and jersey works that have been designed and created with appareluse in mind.
- The mixing ratio of materials used is unrestricted.
- Also, each participant may submit up to 3 entries.

### Delivery form

#### **Entry submission period : September 1 (Fri) - September 29 (Fri) 《Must Arriving》**

Original textile and jersey works of 30 cm minimum width and over 3 meter length, designed and

manufactured by the entrant. However, for student participants, there are no size restrictions.

※please indicate front, rear, top and bottom on the submitted work.

※Please submit a separate Application Card (as provided) for each entry.

#### **Judging panel meeting : October 19(Thu) & 20 (Fri)**

Judging will be divided into a General Division and a Student Division.

In a General Division, the textile entries will be evaluated on their business potential for mass production. However, they will be judged on their artistry.

### Members of the judging panel

Chairperson / Kanako Kajihara (KAJIHARA DESIGN STUDIO Inc.)

M e m b e r / Keisuke Ikeya (UNITED ARROWS LTD)

Kohei Shinohara (FLANDRE Co., LTD)

Tadao Takeuchi (Bunka Fashion Graduate University)

Kunihiko Morinaga (ANREALAGE Co., LTD)



## Awards and Prizes

### General Division

<b>Grand Prize</b>	<b>1work ¥ 500,000</b>	<b>Excellence Prize</b>	<b>5works ¥ 100,000</b>
<b>Second Grand Prize</b>	<b>1work ¥ 250,000</b>	<b>Superior Works</b>	<b>20works ¥ 50,000</b>
<b>New Face Prize</b> ※Targeting under 35 ages	<b>1work ¥ 100,000</b>		

### Student Division

<b>Sprout Prize</b>	<b>1work ¥ 200,000</b>	<b>Incentive Prize</b>	<b>10 works ¥ 10,000</b>
<b>Seed Prize</b>	<b>5works ¥ 30,000</b>		

### Exhibition of winning works

- Exhibition of winning works will be held in February 21 (Wed)-23 (Fri), 2018 in the Exhibition of "THE Bishu" at Ichinomiya Gymnasium (General Division and Student Division).
- Exhibition of winning works will be held in November, 2017 at Tokyo (General Division).
- The other Exhibition will be held.

### Awards Ceremony

- All the prize will be announced immediately after Judging panel meeting.
- Awards Ceremony will be held to fit the opening ceremony of the Exhibition of "THE Bishu" in February 21 (Wed), 2018, in order to commend winners.
- ※An applicant received Grand Prize, Second Grand Prize and New Face Prize be sure to participate in Awards Ceremony.(Preparing the part of transportation expenses)
- ※We will invite Winners in Student Division in Awards Ceremony. (Preparing the part of transportation expenses)

### Attention

- The property rights of prize works in General Division (except Superior Works) are held by the contest host ; they will not be restored to the entrants. In contrast, the design rights are retained by the entrants.
- All non-prize works in General Division and works in Student Division will be returned after the Exhibition of winning works.
- The contest hosts do not accept responsibility for any damage whatever arising from the use, transport, or exhibition of any works.

### Where to send your works & Questions and correspondence

#### Japan Textile Contest Host Committee

Address: Ichinomiya Fashion Design Center Foundation  
 4-1 Minamimasagame, Mabiki, Yamato-cho, Ichinomiya, Aichi 491-0931 Japan  
 Tel: +81-586-46-1361 Fax: +81-586-44-7455  
 URL: <http://www.fdc138.com/jtc/>  
 E-mail: [postmaster@fdc138.com](mailto:postmaster@fdc138.com)





- Japan Textile Contest Host Committee Member of the organization**
- Ichinomiya City
  - Ichinomiya Chamber of Commerce and Industry
  - Bisai Woolen Textile Industrial Cooperative Association
  - Ichinomiya Textile Wholesalers
  - Ichinomiya Fashion Design Center Foundation